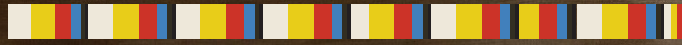


# Panorama of Roots

Showcasing Asian Heritage



**5.3 – 5.29.2025**

**Reception | Saturday, May 3, 3 – 5 pm**

**The gallery is open during LIU Post Library hours.**



**Steinberg Museum of Art**

B. Davis Schwartz Library Lower Level

720 Northern Blvd. Brookville, NY 11548

Curated by **The Garage** Art Center



Group Exhibition

# Panorama of Roots

## Showcasing Asian Heritage

### About the exhibition

The Steinberg Museum of Art at LIU Post proudly presents *Panorama of Roots: Showcasing Asian Heritage*, a dynamic group exhibition in honor of Asian American and Pacific Islander (AAPI) Heritage Month. On view from May 3 to May 29, 2025, this exhibition brings together twenty-one distinguished artists with Asian roots, offering an evocative exploration of cultural identity, migration, and artistic expression—universal themes that resonate across borders and backgrounds.

Through a diverse range of artistic media and perspectives, *Panorama of Roots* illuminates the distinct narratives of East Asian-descended artists. Their works interweave personal and collective histories, creating a compelling visual dialogue that speaks to the depth, complexity, and global significance of Asian heritage.

This exhibition serves as a vital platform for both Asian American and Asian artists, offering a space to challenge stereotypes, redefine representation, and explore identity in all its nuances. Through themes of tradition, displacement, cultural memory, and contemporary life in New York, *Panorama of Roots* invites audiences of all backgrounds to engage in a profound reflection on the interconnectedness of heritage and identity in today's shifting world.

### Participating Artists

Ami Park | 박아미

Chemin Hsiao | 蕭喆旻

Dong Hee Lee | 이동희

Dong Kyu Kim | 김동규

Haney Kyung Kim | 김경한

Hyo Jeong Nam | 남효정

Jae Hi Ahn | 안재희

Jeannie Choe | 최지니

Jeong Min Park | 박정민

Jisook Kim | 김지숙

Lily Honglei | (Lily Yang & Honglei Li)

Sei Ryun Chun | 천세련

Seung Lee | 이승

Sophia Chizuko | 柳原智壽子

Stephanie S. Lee | 스테파니 리

Sueim Koo | 구수임

Sui Park | 박수이

Weihui Lu | 陆伟慧

Wonju Seo | 원주서

Yu-Whuan Wang | 王玉環



The **Garage** Art Center

The exhibition is curated by The Garage Art Center, with venue sponsorship generously provided by LIU Post.

## Ami Park

**Ami Park**, originally from South Korea, currently resides and works in Queens, NY. Her artistic practice centers on textiles, exploring the connections between the human mind, emotions, and objects. She focuses on themes of self-awareness, identity, and perception. Influenced by her immigrant experience, spirituality, and scientific theories, her interdisciplinary approach challenges societal norms and pressures across different cultures. Through her work, she invites viewers to reconsider familiar concepts from new and layered perspectives, debunking subconscious biases.

Park has exhibited her work at various venues, including the Bronx Museum, MoMA PopRally, KuBe Art Center, Pen + Brush, the BLANC, Asian American Arts Alliance, Chashama, New York Live Arts, the New York Foundation for the Arts, SVA Flatiron Gallery, and RIVAA Gallery in New York among others. She has been awarded the AIM Fellowship by the Bronx Museum and participated in the Immigrant Artist Program facilitated by the NYFA. Park has received grants from Cerf Plus, The Puffin Foundation, NYFA, and CRNY, and has completed residencies at LMCC Arts Center, Uncool Artist, and the School of Visual Arts. Park holds a BFA in Fashion Design from Parsons School of Design.

Her upcoming exhibitions include group shows at the Blanc and 550 Madison, a solo show at The Garage Art Center in 2025 and a two-person show at the Nars Foundation in 2026.

*"Contours explores the tension between uncontrolled growth and transformation, drawing from the metaphor of tumor-like expansion while embodying the passage through thresholds of change. Cotton rope, yarn, needles, and foam intertwine to create a textured surface that appears both organic and disruptive—unfolding at the edge of formation and dissolution."*

For more information, please visit [www.ami-park.com](http://www.ami-park.com).



**Infinity**  
2020 | 59" H x 56" W  
Embroidery thread  
**NFS**



**Contours**  
2024 | 18" H x 15.5" W  
Cotton rope, yarn, needles, foam, glue on canvas  
**NFS**

## Chemin Hsiao

**Chemin Hsiao** is a visual artist based in Queens & Brooklyn at the Chashama Studio Space. Hsiao received his BFA and MFA from the School of Visual Arts.

In 2021, his artist banners "Dandelions Know" was selected as the winner for the Noguchi Museum to raise awareness to the anti-Asian violence surging during the pandemic. He's a recipient of the Support for Artists Grant from NY State Council on the Arts, New Work Grant & ArtSite Public Art Commissioning from Queens Arts Fund and New York foundation for the Arts (NYFA). In the NYFA IAP program, he's a mentor/consultant to provide career advice for immigrant artists since 2022.

Hsiao has taken part in artist residencies at the Kingsbrae International Residence for the Arts in Canada, and the Cuttyhunk Island Artist Residency in Massachusetts. He has completed several commissioned murals including Jackson Heights, Elmhurst, Flushing in Queens and Prospect Heights in Brooklyn, exhibited in solo exhibition at Queens Botanical Garden & Flushing Town Hall, and group exhibitions at venues such as Walter Wickiser Gallery, SFA Projects, New York Foundation for the Arts, and Jamaica Center for Arts and Learning.

Besides his studio practice, Hsiao serves as a professor for St. John's University, New York School of Interior Design, and University of Mount Saint Vincent. He also taught visual arts workshops to students from kindergarten to seniors for organizations such as the Met Museum, Noguchi Museum, New York Botanical Garden, Queens Botanical Garden, ProjectArt, Queens Public Library, and senior centers in Queens & Brooklyn.

*"The piece "Little Auntie" was a part of the 2024 solo exhibition "From Past to Present" at the Flushing Town Hall. It's a series of watercolor paintings made from observations of photos, printed materials, and still image from videos. The selection of those reference images were based on the artist's personal connections with the visuals, whether its history relates to his culture background from Taiwan (or Asia/ USA in general, reflecting where he resided), or directly links to memories to his family from the past and the present.*

*The artwork depicts from an observation of a photo (taken around year 1983), in which the artist's late auntie holding his big brother, still a baby at the time."*

For more information, please visit [www.cheminart.com](http://www.cheminart.com).



**Xiao Gugu (Little Auntie) - 小姑姑**  
2023 | 19" H x 15.1" W framed  
Watercolor on Paper | **\$590**



**1988.08.10**  
2022 | 15.1" H x 19" W framed  
Watercolor on Paper | **\$590**



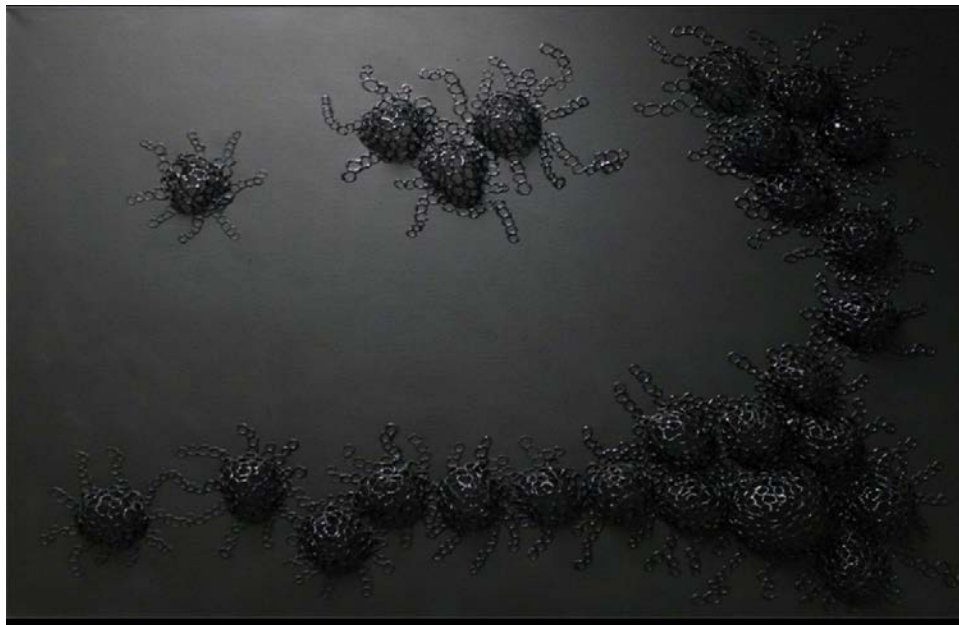
**Graduation Day (1975) - 畢業日**  
2022 | 19" H x 15.1" W framed  
Watercolor on Paper | **\$590**

## Dong Hee Lee

**Dong Hee Lee** is an artist based in New York. She received her BFA in 2009 and MFA in 2012, both from Long Island University C.W. Post, NY. Her work has shown in many domestic and international art fairs and exhibits such as NYU Langone Medical Center, Hutchins Gallery Brookville, Yegam Art Space, Hillwood Art Museum, and Korean Culture Center in Washington D.C., also participated Portal Art Fair, Miami Red Dot Art Fair, Governors Island Art Fair, and Fountain Art Fair, Hong Kong Affordable Art Fair, SEOUL OPEN ART FAIR in Korea. And her work has been featured in the Times Ledger, the Washington Post, HYPERALLERGIC, Art Report, NY Korean Times, Fine Art Magazine, and the Epoch Times to name a few.

*"My work uses abstract patterns and forms to evoke the drama and beauty of our invisible origins. The human egg is the only perfectly spherical cell in the human body—a glowing, radiating organism. This image is symbolized in my work as a web of interconnected circles, each carefully formed from molten glue and "drawn" using a glue gun. The synthetic glue material is shiny and pliant, resembling a membrane. I create hundreds of these small, extruded circles in a process of accumulation that suggests gestation and the multiplication of cells. The combination of these small, repeating units forms large, complex structures, either as sculptural objects or patterns on canvas."*

For more information, please visit [www.artistdongheelee.com](http://www.artistdongheelee.com).



**Black vital force**  
2011 | 36" H x 48" W  
Black hot glue  
**\$3,500**

## Dong Kyu Kim

**Dong Kyu Kim** is a mixed-media artist and fashion designer whose works are constructed of paper receipts, tickets, and other materials collected over the past 14 years since relocating to the United States. All his materials are sewn together by hand. Kim's work explores his relationship to the U.S., the concept of the American dream, and how individual lives are affected by transitions in global economic structures.

Kim has exhibited in museums and galleries throughout the U.S. He recently received a 2021 New Jersey Individual Artist Fellowship Award from the New Jersey State Council on the Arts and his work has received awards from many institutions, including the Florida State University Museum of Arts, FL; Oklahoma State University, OK; Minot State University, ND; and many others. He received a Bachelor of Fine Arts Degree in Fashion Design.

*"My work is composed of paper receipts, tickets, envelopes, and documents, as well as plastic and paper shopping bags and stickers. Each item provides a record of my various activities at a particular place and time. The receipts and shopping bags that I collect represent capitalism, consumerism, and my aspiration for wealth, status, and success. As I experienced the radical reshaping of the global economy, along with increasing globalization, I became obsessed with the capitalistic ideals of money, fame and success. My work asks questions about the impact of American capitalism on one's values. It is an examination of the roots of our desires, and how we determine value. I sew the papers and other materials together by hand in to create a patchwork. The repetitive and meditative act of stitching abandoned objects, leftover or discarded things(not special, unnoticed, undiscovered) helps me to record the passing of time and highlights the sanctity of labor."*

For more information, please visit [www.dongkyu-kim.com](http://www.dongkyu-kim.com).



### **THE UNITED STITCHES**

2024 | 24" H x 28" W

Photography print of the original work,

*The United Stitches* (2017)

Paper receipts, thread,

Swiffer microfiber cloths

**NFS**



## Haney Kyung Kim

**Haney Kyung Kim** majored in sculpture at Tama Art University in Tokyo, Japan. He has held seventeen solo exhibitions in cities including Tokyo, Yokohama, Los Angeles, and New York, and has participated in numerous group exhibitions across Seoul, Amsterdam, Tokyo, Osaka, Sapporo, Miami, North Adams, New York, Jerusalem, and Tel Aviv. Over the years, he has taken part in more than 300 art shows, symposiums, and collaborative projects around the world. His public artworks are on display in museums and parks across the globe.

*"Today's media-driven communication often deepens prejudice. I cut and paste images from media as a way to confront this, transforming them into the medium of my art. Using needlecraft-inspired drawings, I reinterpret everyday biases into what I call 'ideal prejudice'—an abstract, Platonic record of thought.*

*This method, built on reconstructed symbols and quiet repetition, does not aim to deliver a clear message. Instead, its ambiguity invites reflection. Miscommunication itself becomes a subject—prompting viewers to step back from reality and imagine a new, shared space for understanding.*

*Erasing media-fed memories may be the first step toward reaching the ideal. Creating space for that reflection is my greatest wish."*

For more information, please visit [www.art61kyung.com](http://www.art61kyung.com).



**The Drawing**

2018 | 26" H x 26" W each

Hand- stitched with dyed thread on dyed canvas

**\$5,500 each**

\* To purchase artwork, please contact Stephanie Lee at [Contact@garageartcenter.org](mailto:Contact@garageartcenter.org)

## Hyo Jeong Nam

**Hyo Jeong Nam** is a Korean-born artist living and working in New York. She received her M.F.A at Pratt Institute. Since she graduated from Pratt, She had eight solo shows. She also participated in many group exhibitions in galleries, museums art fair in US and Korea, such as Kips Gallery, SICA, Chashama, Scope Art Fair, Red Dot art fair, and fountain art fair. She was a resident at Gallery Aferro, Ox-bow and Vermont Center with a full scholarship.

*"My work is an exploration of growth, connection, and the infinity. It begins with a single line. From there, it multiplies, branching outworld like veins or roots. Lines split, overlap, and converge, creation layers that pulse with life. they are both deliberate and unpredictable, echoing the rhythm of existence."*

*"These lines are metaphors for the relationship the bind us- the ways we influence and are influenced by one another. They carry the weight of history, the echoes of generations and the fragile beauty of fleeting moments. Controlled yet free, they mirror the tension between order and chaos, structure and spontaneity that defines our lives."*

For more information, please visit [www.hjnam.com](http://www.hjnam.com).



**Greenish branch**

2025 | 30" H x 40" W

Ink on canvas

**\$3,000**



**Branch-Root**

2011 | 16" H x 16" W

Ink on canvas

**\$1,600**



## Jae Hi Ahn

**Jae Hi Ahn** is a Korean born, New York based artist. Ahn's work has been presented widely in New York at venues that include Sunroom Project Space at Wave Hill, Bronx; Chashama, NYC; White Columns Online, NYC; Steinhardt Conservatory Gallery at Brooklyn Botanic Garden; Broadway Windows at New York University; The Field Sculpture Park at Art Omi, Ghent; Elizabeth Foundation for the Arts, NYC; LMCC's Arts Center at Governors Island; Stone Quarry Hill Art Park, Cazenovia, NY, and Nathan Cummings Foundation, NYC.

She has been awarded grants from Queens Arts Fund (NYFA/DCLA), The Puffin Foundation, Brooklyn Arts Council Community Arts Regrant (NYCDCA), Urban Artist Initiative Fellowship, NYC, and has participated in various residencies at LMCC Swing Space, NYC; Ragdale Foundation Residency, Lake Forest, IL; I-Park, East Haddam, CT; VCCA, Amherst, VA; Hambidge Center, Rabun Gap, GA; and Sculpture Space Residency, Utica, NY.

Her work is currently included for the Curated Artist Registry at White Columns and she's a participant of NYFA's 2025 Immigrant Artist Mentoring Program, NYC. Her work has been featured in The New York Times, The L Magazine, The Brooklyn Paper, The Brooklyn Rail, The Artist of the Month at Bric Rotunda Gallery and Untapped New York

*"My work centers on community well-being including the relationship between human and nature, and the connection between different cultures and different races in the community. Through creating multidisciplinary arts in the field of installation, sculpture, ceramic, photography, and watercolor painting, I examine the relationship between my Korean Cultural background and the community's Natural & Multicultural surroundings by reimagining & interconnecting Cultural objects, memories, daily life, and Nature in order to bring the awareness of social inequity, sustainability, and Hope."*

For more information, please visit [www.jaehiahn.com](http://www.jaehiahn.com).



**Home Series, Women & Nature #5**

2025 | 47" H x 38" W x 0.4" D

Ceramic Sculpture, Porcelain Clay

**Price on Request**



**Home, BW11**

2024 | 34" H x 26" W

Photography, Printed on fabric

**Price on Request**

## Jeannie Choe

**Jeannie Choe** is a Korean-American painter. Her portfolio is diverse in style and incorporates abstraction in oil painting, acrylic and mixed media.

She studied art the prestigious program of Ehwa Woman's University in Korea. She further studied at Parson in NY and Kobe Fashion Institute in Japan. Her International accomplishment are numerous, and she continues her works in United States.

*"Every day I am overwhelmed by the feeling of reverence from the natural beauty of our world. Every color is unique and has a purpose. Every movement is dynamic and never the same. My inspiration comes from this vast complex and colorful world God made us. My artwork is a way to translate this complexity into a visual form and for me to share my view on life with others."*

For more information, please visit [www.jchoeart.com](http://www.jchoeart.com).



**Whispers of Spring**  
2025 | 42" H x 36" W  
Mixed Media on Canvas  
**\$2,500**



**그의 인도 하심 따라 (Following His Guidance)**  
2025 | 36" H x 50" W  
Mixed Media on Canvas  
**\$1,200**

## Jeong Min Park

**Jeong Min Park** was born in South Korea and moved to New York to pursue her MFA in Fine Arts at C. W. Post of Long Island University, after completing her bachelor degree in Fine Art and MFA at Suwon University in South Korea. She is a Painter, who has shown artwork in USA, China and South Korea. She has 16th Solo Exhibitions and several group exhibitions.

*"My paintings are closely aligned with abstract art, but they are still not completely abstract because I feel that this style is insufficient to express my ideas and imagination.*

*I use many layers because they are similar to my memories. I have many relationships and experiences, and all help make me who I am now"*

For more information, please visit [www.jeongminjimin.org](http://www.jeongminjimin.org).



**Autogenesis O**  
2018 | 24" H X 48" W  
Korean Pigment on Canvas  
\$2,500



**Autogenesis BO**  
2017 | 12" H X 12" W  
Korean Pigment on Canvas  
\$600



## Jisook Kim

**Jisook Kim** received her B.F.A. and M.F.A. in Sculpture from Sungshin Women's University in South Korea. Her practice spans sculpture, installation, and drawing, often inspired by the forms and energy found in nature. By embodying natural forces through both artificial and organic materials, she seeks to blur the boundaries between reality and imagination, human life and the cosmos.

She has presented solo exhibitions and participated in numerous group shows throughout Korea. Since relocating to the United States, Kim has completed a residency with the 4heads Artist in Residence Program (New York, 2018) and held solo exhibitions at venues including Fou Gallery (New York, 2019), Gallery Sensei (New York, 2017), New York Minded (2016), and Kwanhoon Gallery (Seoul, 2008).

Her work has also been featured in notable exhibitions and programs such as ChaShaMa's Diamond District Windows (2018), the Governors Island Art Fair (2017, 2018), the Korean Cultural Centers in New York and Washington D.C. (2019, 2021), Jersey City Hall, A.I.R. Gallery, and the NARS Foundation, among many others.

*"My drawings primarily use the marbling technique to visualize the flow of time and energy. The fluid lines created through this process represent the continuous movement of time and space. Much of my work is inspired by nature and often incorporates imagery of the universe—exploring the macrocosm of the natural world and our place within it as a microcosm of infinite life."*

*"My artistic philosophy is rooted in the belief that humans are inherently connected to and influenced by nature and the cosmos, and that all three can exist in harmony. By focusing on themes of cosmology and nature, I seek to reflect the microcosm of the self and explore what it means to be human."*

For more information, please visit [www.artistjisookkim.com](http://www.artistjisookkim.com).



**Meteor shower**

2024 | 20" H x 16" W framed  
Mixed Media on paper  
**\$450**



**Universe**

2025 | 20" H x 16" W framed  
Mixed Media on paper  
**\$550**

## Lily Honglei

**Lily Honglei** is an Asian immigrant artist collaborative whose practice encompasses painting, installation, and time-based media. Often inspired by East Asian cultural heritages, their work focuses on the Asian immigrant experience, history, and identity.

Lily Honglei present their multidisciplinary art practice at The Shed at Hudson Yards in New York, Provincetown Art Association and Museum, Chinese American Arts Council in New York, the Museum of Art and Design, The Painting Center, the Westbeth Gallery, Jamaica Center for Arts & Learning, Queens Museum, Eyebeam Art Technology Center, Institute of Contemporary Art Boston, to name a few. They are recipients of the New York Foundation for the Arts Fellowships in Painting and in Interdisciplinary Work, the Lillian Orlowsky and William Freed Grant for Painters, The Adolph and Esther Gottlieb Foundation Individual Support Grant, the Creative Capital Award for Moving Image & Visual Arts, New York State Council on the Arts Individual Artist Grants, Queens Council on the Arts New Work Grants, Flushing Town Hall Artist in Queens Grants, Jerome Foundation grant (via Turbulence.org), and the People's Choice Award at the Museum of Art & Design in New York. More Art, Korea Art Forum, and Jamaica Center for Arts & Learning commissioned Lily Honglei to create public art projects in New York City. Many art historians, including Margaret Hillenbrand and Angela Becher, discussed their art practice extensively. Their work has been frequently featured on Hyperallergic, NYFA interview, Asian American Arts Alliance AMP Magazine, among others.

*"An imitation of The Statue of Liberty, the painting **Departure** visualizes the painful experience of long-term family separation endured by many immigrant families. The painting features Lady White, one of the most popular characters in ancient Chinese folktales, who holds her baby and waves farewell to her departing husband. The Chinese characters engraved throughout her body are the most frequently used words in letters between Chinese immigrant family members: remembrance, waiting, hope, endurance, pain..."*

For more information, please visit [www.lilyhonglei.net](http://www.lilyhonglei.net).



**The Magic Wok**  
2024 | 60" H x 48" W  
Oil on canvas | **\$12,000**



**Departure**  
2023 | 48" H x 36" W  
Oil on canvas | **\$12,000**

## Sei Ryun Chun

**Sei Ryun Chun** is a multidisciplinary artist based in New Jersey. Since moving to the United States in 1981, she has continued her studies in painting, installation, ceramics, essay writing, performance, and conceptual art. Deeply engaged with themes of Korean identity, Chun expresses her work through both visual and performative practices, including frequent presentations of the Traditional Korean Tea Ceremony along the East Coast.

She has held 27 solo exhibitions and has curated shows in New York, Korea, and Europe. Her exhibitions often integrate her expertise in the Korean Tea Ceremony, blending visual art with cultural tradition.

Inspired by the meditative qualities of Korean tea culture, Chun's mission is to share its unique beauty through art, ceremony, and writing—while also educating audiences about its similarities and distinctions from other East Asian traditions.

*"This piece is a hymn to the natural world, a living meditation steeped with tradition and purpose. Every sip of tea is a moment of reflection that I poured into this work. The 435-inch delicate, handmade Korean fabric became my canvas, and the tea leaves and water were absorbed into its raw fibers.*

*Throughout the four seasons, I allowed the tea to fulfill its will and chart its course into the fabric. The tea marked its essence with lines that highlight the interconnectedness of everything. Each mark is a glimpse into my daily ritual and process, a map drawn by the hands of nature. Similar to the view of rivers and mountains from a heavenly perspective, the tea's path is intentional yet organic, guided by gravity and chance, mirroring how the world around us is formed.*

*This piece is my invitation, encouraging you to listen, pause, and see the sacred rhythm of nature, its beauty, and its quiet persistence."*

For more information, please visit [www.seiryunchun.com](http://www.seiryunchun.com).



**The Scent of Tea**

2022 | 27" diameter

Tea dyed on leather | **\$4,000**



**Aria of Tea**

2022 | 435" H x 14" W

Mixed Media, Tea dyed Korean Traditional fabric, silk linen | **NFS**



## Seung Lee

**Seung Lee** is a Korean American contemporary artist and a Professor of Art at Long Island University Post. His paintings, drawings, and large-scale installations have been exhibited extensively in the US and internationally: Turkey, Italy, France, Germany, Japan, China, and Korea. He has received numerous reviews in the New York Times, Newsday, Radio Interview with RTHK (HONG KONG), WLIW-FM, Kyoto Times, Korea Daily News, Busan Daily, Art Word magazine, Art Price magazine, Art in Culture magazine, Art Price magazine, Art and People magazine, and selected for Woori Bank of Korea's 2018 VIP Calendar.

Seung Lee received many awards: New York State Governor, Nassau County Supervisor, Suffolk County Supervisor, New Jersey City Mayor, and Best Artist of the Year Award from the Korean American Professors Association in 2022. In 2011, Seung was awarded "Best International Korean Artist" by the Korean Art Association.

*"This painting was produced when Russia invaded Ukraine. Watching images of the refugees fleeing their country, especially children and the elderly, broke my heart."*

For more information, please visit [www.leeseung.com](http://www.leeseung.com).



**CHILDREN REFUGEE**

2022 | 24" H x 18" W

Mixed Media on Canvas

**\$4,000**



**TIRED FEET**

2022 | 20" H x 16" W

Mixed Media on Canvas

**\$3,000**

## Sophia Chizuco

**Sophia Chizuco** is a multidisciplinary artist, educator, and curator based in New York City, originally from Japan. She holds a B.A. in Art and Education from Tokyo Gakugei University and a Certificate in Painting from the Art Students League of New York. She is also the founder of froggies-village, a creative community initiative.

Chizuco has led and participated in public art and community-based projects with organizations such as ArtBridge, NYC Health + Hospitals' Arts in Medicine, ProjectArt, and SU-CASA. She has conducted workshops at the Bronx Council on the Arts, NARS Foundation, and Lewis Latimer House Museum.

Her work has been exhibited internationally and recognized with awards including the Grand Prize from ArtNetwork and a Merit Scholarship from the Art Students League. Exhibition highlights include the Staten Island Museum, ChaShaMa, Tokyo Metropolitan Art Museum, and the Affordable Art Fair in Brussels.

*"As a multidisciplinary artist based in New York with roots in Japan, my work is shaped by the natural beauty and rhythms of the world around me. Growing up amid green tea fields, mountains, and the Pacific Ocean, I developed a deep connection to nature—often sketching frogs, insects, and other small creatures that continue to inspire my art."*

*Influenced by Ukiyo-e woodblock prints, I reimagine traditional forms with a whimsical touch, portraying frogs in playful, human-like ways. These works explore the relationship between nature, mythology, and modern life, inviting curiosity and joy.*

*My practice reflects the interconnectedness of people and the natural world, aiming to spark reflection, wonder, and a sense of connection through visual storytelling."*

For more information, please visit [www.sophiachizuco.com](http://www.sophiachizuco.com).



**ride on a lion** 獅  
2023 | 14" H x 18" W  
Acrylic on canvas  
\$750



**Daruma** 禅  
2023 | 18" H x 14" W  
Acrylic on canvas  
\$750



**fly with Dragon** 駆  
2023 | 14" H x 18" W  
Acrylic on canvas  
\$750

## Stephanie S. Lee

**Stephanie S. Lee** is a Queens-based artist, curator, and educator whose paintings draw inspiration from minhwa, traditional Korean folk art. Her work has been exhibited internationally at institutions including the Korean Cultural Centers in Paris, Madrid, and Washington, D.C.; the National Museum of Korea; Islip Art Museum; and the Charles B. Wang Center. She has also shown at major art fairs such as Scope Art Fair, Spectrum Miami, and the Affordable Art Fair (New York and Hong Kong).

Lee has received grants and awards from NYFA, Queens Council on the Arts, Flushing Town Hall, and NYSCA, and was selected for the U.S. Department of State's Art in Embassies program. In 2024, she won Apollo's Decathlon at Château de Montsoreau Museum of Contemporary Art in France. Her work has been featured in The New York Times, The Wall Street Journal, Hyperallergic, NY1, and CBS News. She holds a BFA and MS from Pratt Institute.

*"My 'Munjado' Series reimagines traditional Korean ideographic paintings by transforming letters—both Hangul and the Roman alphabet—into visual expressions of identity. Each piece reflects the layered thoughts I carry as a middle-aged woman, mother, wife, and artist. 취미생활 responds to a word I've often heard and endlessly reflected on. Symbols like the ouroboros (a nod to my birth year, the Year of the Snake), shaped as an infinity sign, along with thorn bushes and a pink diamond, represent endurance, pain, hope, and resilience.*

*'The 12 Animal' Series draws from Korea's zodiac, portraying each of us as quiet warriors navigating daily life. 'The Blue Snake' welcomes 2025—the Year of the Snake—as a symbol of strength and self-reflection. 'Begin Again' is inspired by the White Tiger Flag of the Joseon Dynasty, once carried into battle, now reimagined as a call for renewal in the wake of the pandemic year, 2022 "*

For more information, please visit [www.stephanieslee.com](http://www.stephanieslee.com).



**The Blue Snake**  
2025 | 17" H x 12" W  
Pine Black, color pigment,  
and ink on linen  
**\$1,200**



**Begin Again**  
2022 | 17" H x 12" W  
Pine Black, color pigment,  
and ink on linen  
**\$1,200**



**취미생활 (Hobby Life)**  
2025 | 56" H x 26" W  
Pine Black, color pigment,  
and ink on linen  
**NFS**



## Sueim Koo

**Sueim Koo** creates abstract landscapes that visually express emotions and memories, drawing inspiration from her detailed diaries where she documents both poignant events and everyday observations. Her work has been widely exhibited, with notable solo shows at the Belskie Museum of Art and Science (NJ), the Edward Hopper House (NY), and the Piermont Flywheel Gallery (NY). She has showcased her art at prestigious venues like the Islip Art Museum, George Billis Gallery, and Queens College Art Center (NY), as well as the Korean Cultural Center in Washington, DC, and the Woodstock Artists Association and Museum (NY).

Koo has gained international recognition through art fairs such as the Affordable Art Fair in NYC, Aqua Art Show in Miami, and the Gwang Hwa Moon International Art Fair in Seoul. In 2015, she was one of two Korean artists featured at 'Korea Night' by the International House of Philadelphia. More recently, she exhibited at Taller Boricua Gallery (NY) and Ellington-White Gallery (NC), where she won a 3rd place award. In 2021, she earned 2nd place in Fine Art Publication 'APER0.'

A board member of The Garage Art Center since 2020, Koo also serves as Secretary/Assistant to the President of the New York Society of Women Artists since 2015. She immigrated to the US at 36 and began her artistic journey later in life, earning a BFA from SUNY Purchase at 50 and furthering her studies at the Art Students League in New York.

*"I create abstract, dreamlike landscapes that serve as visual expressions of thoughts, emotions, and memories. Inspired by diaries I've kept since adolescence—filled with emotional events and everyday observations—my work subtly alludes to the natural world while evoking interior or spiritual realms rather than literal depictions of nature."*

For more information, please visit [www.sueimkoo.com](http://www.sueimkoo.com).



**Won't forget being embraced by the irresistible and dazzling moment**  
2021 | 24" H x 24" W  
Mixed Media Collage on Canvas  
**\$1,500**



**Greetings of a pinkish morning that begins with the aroma of coffee**  
2021 | 36" H x 36" W  
Mixed Media Collage on Canvas  
**\$2,500**

## Sui Park

**Sui Park** is a New York based artist born in Seoul, Korea. Her work involves creating 3-dimensional organic forms and biomorphic ambiance that are static yet dynamic, illusionary and mystical. Park had several solo exhibitions and public art commissions including Microcosm at Herning Museum of Contemporary Art in Herning, Denmark in 2025 and and City Ecology at Bella Abzug Park in New York City in 2024. Park's artwork has been acquired by many places including Jordan Schnitzer Museum of Art in Oregon and TAMAT Museum of Tapestries and Textile Arts of The Wallonia-Brussels Federation in Tournai, Belgium.

Her work were published and mentioned in the New York Times, Artribune, Washington Post, Hyperallergic, Artnet, Vice and Colossal and many more. Sui Park's education includes MDes in Interior Architecture at Rhode Island School of Design and BFA in Environmental Design at Maryland Institute College of Art. Sui Park also has MFA and BFA in Fiber Arts at Ewha Womans University, Seoul, Korea.

*"Molecule" is an intricate sculptural composition made from hand-dyed cable ties, forming a dynamic network of interwoven structures. The piece evokes organic growth and molecular connectivity, with vibrant hues blending seamlessly into each other, creating a sense of fluid movement. The delicate yet structured form explores themes of interdependence, transformation, and the invisible forces that bind us together."*

For more information, please visit [www.suipark.com](http://www.suipark.com).



### **Molecule**

2023 | 34" H 18" W & 32" H x 19" W | Hand Dyed Cable Ties  
**\$8,000 each**

\* To purchase artwork, please contact Stephanie Lee at [Contact@garageartcenter.org](mailto:Contact@garageartcenter.org)

## Weihui Lu

**Weihui Lu** was born in Shanghai, China, and grew up in Queens, New York. Using the framework of Chinese landscape painting in a contemporary context, her practice explores immigrant experience through place-making, as well as the broader environmental and psychological implications of the modern landscape. Moving between site-specific installations, printmaking, painting and performance, her work has been exhibited at the Venice Architecture Biennale, Tiger Strikes Asteroid NY, Field Projects, and Tutu Gallery, among others, and she has participated in residencies at Wave Hill (2025), Marble House Project (2024), Santa Fe Art Institute (2023), and Byrdcliffe Arts Colony (2022). Lu holds a B.A. in English Literature from Barnard College, Columbia University.

*"In considering the alienation of post-industrial city life from natural materials and rhythms, this piece explores the impact of sunlight. Metal rods extending from the walls are covered in paper pulp made from white jute, a plant also used for medicinal purposes, and capture the light streaming through the window. The hanging wood beads reference daily rhythms, and the use of Buddhist prayer beads. "*

For more information, please visit [www.weihuilu.com](http://www.weihuilu.com).



### **Solstice**

2024 | 25.5" H x 50.5" W

handmade white ash wood beads, found bowl

**NFS**



## Wonju Seo

**Wonju Seo** creates unique geometric and abstract textile art heavily influenced by Jogakbo by utilizing Korean natural fabrics. Seo defines her personal and cultural identity by living and working on her art projects in America. Through her creative and innovative perspective, Seo reinterprets and transforms the traditional formative elements into a modern aesthetic. Through her textile art, Seo captures the profound and pure impressions she experienced when she first encountered the Korean jogakbo at a small gallery in Seoul in 1989. Seo was born and raised in Seoul, South Korea, and is currently based in both New Jersey and Florida. She earned her BFA in fine arts painting from Hong-Ik University in 1988. After completing her studies, she gained experience in various design-related fields by working as a package designer for the Crown Confectionery Company. She also worked as a textile designer, specializing in silk painting for textile studios.

In 1998, she moved to the United States to further her career. After getting married in America in 2005, she began creating her textile art and has held numerous solo exhibitions, juried exhibitions, and group exhibitions at various venues. She has also collaborated with art galleries and interior companies on commissioned art projects. Her works are included in the permanent collections of the Peabody Essex Museum (MA), the Newark Museum (NJ), the Charles B. Wang Center at Stony Brook University (NY), and the Grand Hyatt Hotel, Jeju Dream Tower (Jeju Island, South Korea). Private collectors and art enthusiasts have purchased her wearable and wall hanging art pieces as well.

*"Art begins from my life experience on a daily basis: what I see, what I hear, and what I feel. As an artist, I believe that creating artwork is a journey of self-discovery and the best way to define my identity: who I am, where I came from, and where I am heading. I started creating my artwork while living in the United States. My work was shaped based on appreciation and respect for the values and diversity of both traditional Korean culture and modern Western culture."*

For more information, please visit <https://wonjuseo.format.com>.



**Road: Map Painting \_1**  
2024 | 10" H x 10" W  
Korean natural fabric, thread  
**NFS**



**Road: Map Painting \_2**  
2024 | 10" H x 10" W  
Korean natural fabric, thread  
**NFS**

## Yu-Whuan Wang

**Yu-Whuan** is a New York- and Kyoto-based artist born in Taiwan. Her multidisciplinary work explores cultural intersections, natural and found materials, and spatial relationships—each piece serving as a site of encounter. After working as a textile and graphic design director in Taiwan, she studied contemporary painting and sculpture at Kyoto University of Education, where she was mentored by Gutai pioneer Shimamoto Shozo. Her ongoing connection to Gutai includes a 2017 pairing with Sadaharu Horio at Space31 Gallery.

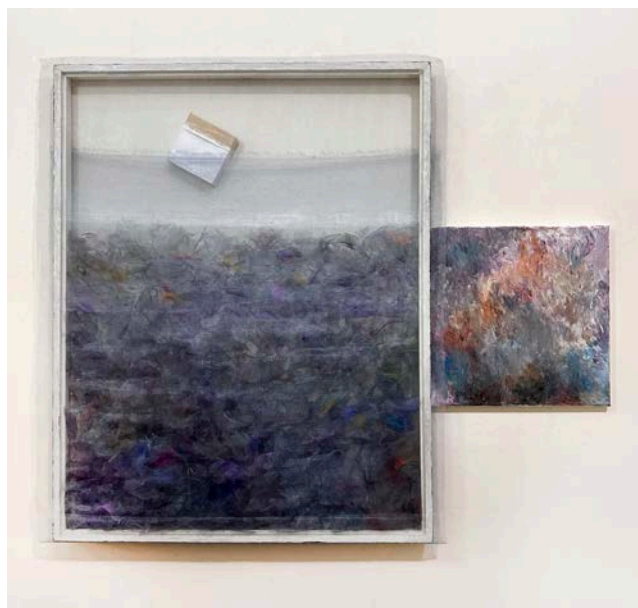
Yu-Whuan has exhibited at venues including the New York Historical Society, Pleiades Gallery, Flushing Town Hall, and The Garage Art Center, as well as the Hira Museum, Osaka Modern Art Museum, and Kyoto Art Museum in Japan. She has created public art for the Kyoto, Uji, and Queens Botanical Gardens and presented a month-long installation series in northern Central Park in 2021. A member of the Kyoto Sculptors Association, she is also the founder of PhilosophyBox, a pop-up art initiative.

*"Wrinkle Painting" sets up an encounter between nature, art, and society. It steps beyond the frame through a cross-boundary juxtaposition of 2-D and 3-D, weaving between traditional and unconventional material, techniques, and form. Here, painting and silk organdy have a conversation of geometries and tone, consciousness and the unconscious.*

*Implicit in the work is an exploration of an immigrant's Taiwanese-American perspective, informed by years of making art in Taiwan, Japan, and the U.S. The painting stands as part of a conversation that welcomes complexity, and rediscovers materials and cultures beyond their immediate contexts and limitations.*

*From the evocation of nature to the juxtaposition of non-representational abstraction and expressionism, with a dash of contemporary experimentation, "Wrinkle Painting" unlocks our frames of reference. Its simple forms generate an atmosphere of resiliency and respect for the agency of each element. As an encounter with the viewer, it gives back to society in a way that leverages aesthetic considerations into action. Philosophy meets movement meets economy meets nature meets us."*

For more information, please visit [www.yuwhuan.com](http://www.yuwhuan.com).



**"Wrinkle Painting"**  
2024 | 43" H x 38" W x 2" D  
Mixed Media | **\$6,000**